



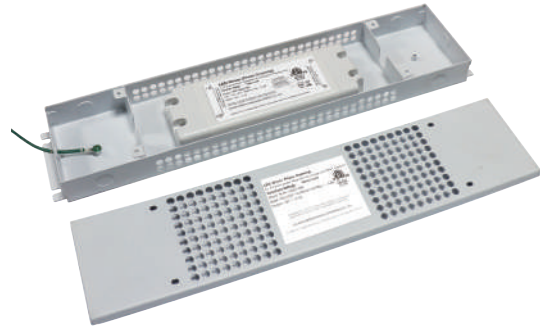
Project: _____ Type: _____
 Notes: _____ Catalog #: _____

DIMMABLE LED DRIVER

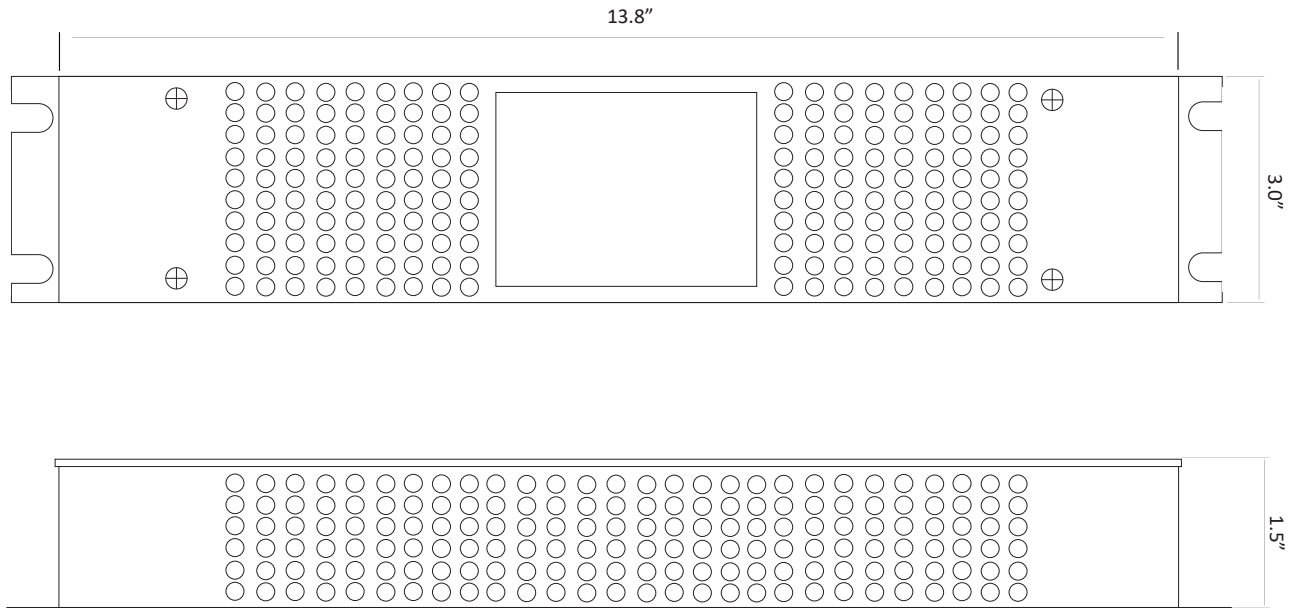
KVP Series

DESCRIPTION

- Constant Voltage
- Compatible with Triac/Forward phase/MLV/ELV dimmer
- 5% minimum load, 0-100% dimming range
- Input: 100-130V AC
- Output: DC 12V, 4.16A / 24V, 2.1A
- Power supply contained within fully enclosed aluminum box
- Dry and damp locations, indoor use only
- Class II rated
- RoHS, cETL Listed
- 3-year warranty



DRAWING



ORDERING INFORMATION

Series No.	Outout Voltage	Wattage	Type
KVP	12=12V DC 24=24V DC	050=50W	TDLJ

Weight

1.92 lbs

Package Dimensions

13.8" X 3.0" X 1.5"

Note: specification subject to change without notice

1622 Boundary Road, Burnaby, BC, Canada V5K 4V4

1.866.695.8966

