



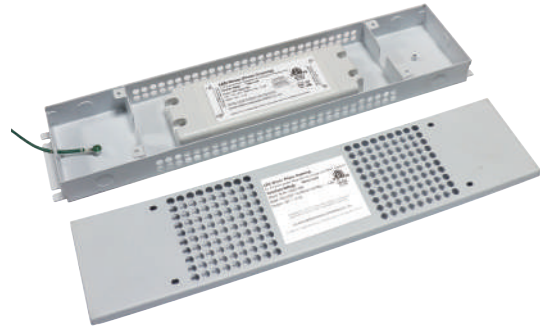
Project: \_\_\_\_\_ Type: \_\_\_\_\_  
 Notes: \_\_\_\_\_ Catalog #: \_\_\_\_\_

# DIMMABLE LED DRIVER

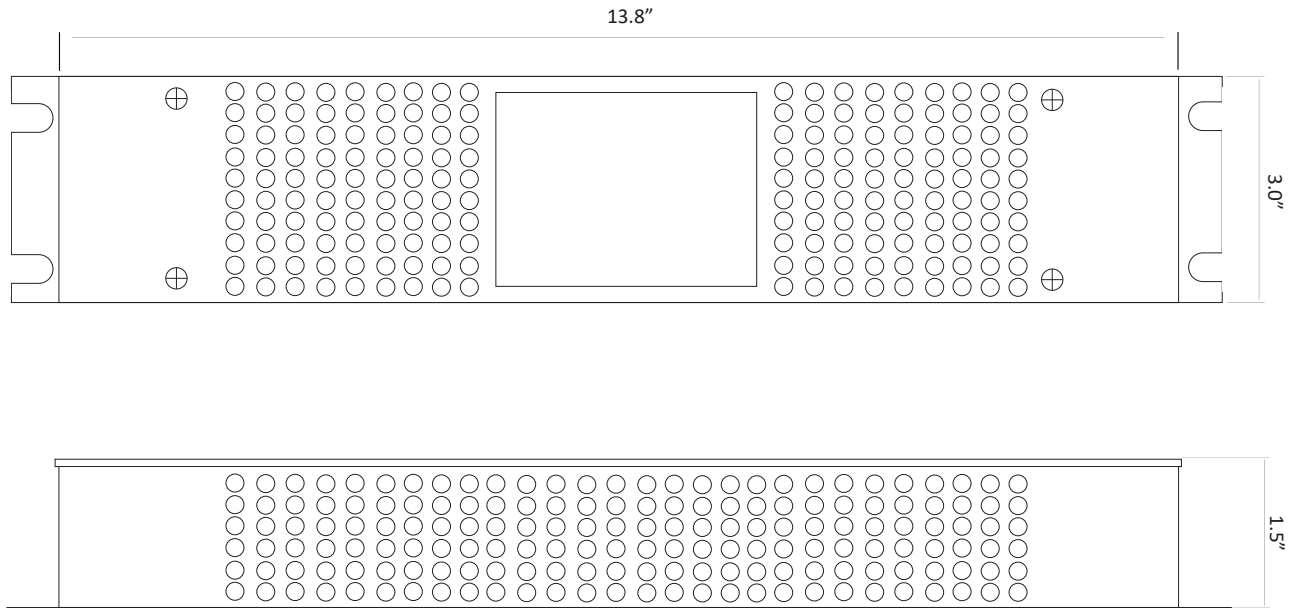
## KVP Series

### DESCRIPTION

- Constant Voltage
- Compatible with Triac/Forward phase/MLV/ELV dimmer
- 5% minimum load, 0-100% dimming range
- Input: 100-130V AC
- Output: DC 12V, 2.08A / 24V, 1.04A
- Power supply contained within fully enclosed aluminum box
- Dry and damp locations, indoor use only
- Class II rated
- RoHS, cETL Listed
- 3-year warranty



### DRAWING



### ORDERING INFORMATION

| Series No. | Outout Voltage         | Wattage | Type |
|------------|------------------------|---------|------|
| KVP        | 12=12V DC<br>24=24V DC | 025=25W | TDLJ |

### Weight

1.61 lbs

### Package Dimensions

13.8" X 3.0" X 1.5"

Note: specification subject to change without notice

1622 Boundary Road, Burnaby, BC, Canada V5K 4V4

1.866.695.8966

