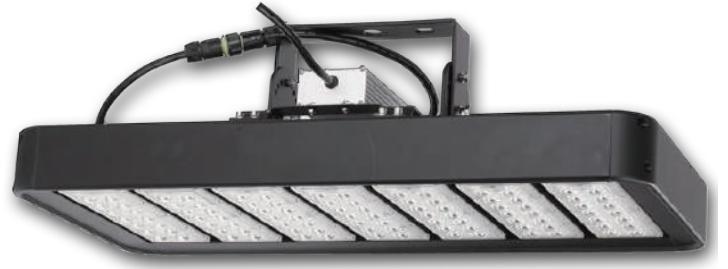



# LED Highbay/Flood/Tunnel Light BOL280WI

## DESCRIPTION

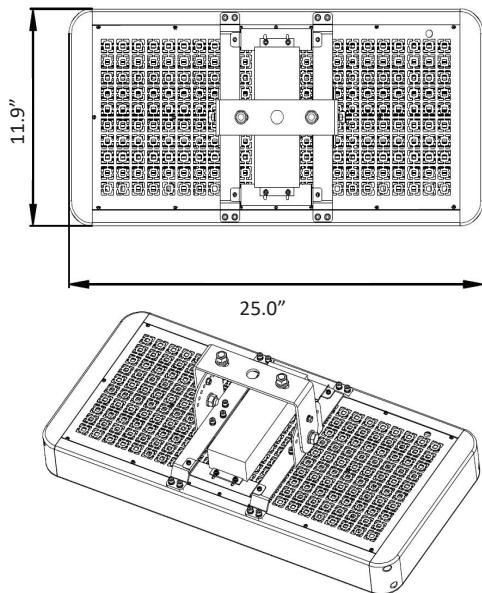
Blue Ocean's BOL280WI High Bay/Flood/Tunnel Light Series is designed for high/low bay, flood lighting and tunnel lighting applications, to replace traditional metal halide or high-pressure sodium lighting fixtures, in sports stadiums, warehouses, tunnels and more. IP65 rating allows the fixtures to be used both indoor and outdoor, with protection against water, corrosion, dust and insects. Superior LED technology enable the product to outperform others in terms of efficacy (130lm/w), minimum losses refraction and reflection inside the optical system. Protection of LED source and the whole product is ensured by the well selected Mitsubishi PC cover and waterproof rubber ring. Superior temperature control technique enable the heat and air to go through the whole fixture, and temperature inside the fixture is controlled within 26°C above the outside environment temperature, contributing to a long lifespan of up to 62,000 hours.



IP RATING	IK RATING	
65	10	



## DRAWING



## SPECIFICATION CHART

Model	BOL280WI-XX
Voltage	100-277VAC
Wattage	280W
Replacement	800W HPS/MH
Lumen Output	30800lm
CRI	78
PFC	0.95
CCT	4000K   5000K
Beam Angle	60°   120°   90*100°
Dimension	11.9"X25.0"X7.7"
Weight	30.0lbs
Operating Temperature	-40~50°C

## ORDERING INFORMATION

**Series No.**  
BOL280WI

**CCT**  
40=4000K  
50=5000K

**Beam Angle**  
60=60°  
120=120°  
90X100=90\*100°

**Voltage**  
U=Universal 100-277VAC

**Dimming**  
Blank=Non-Dimmable  
D=1-10V Dimming

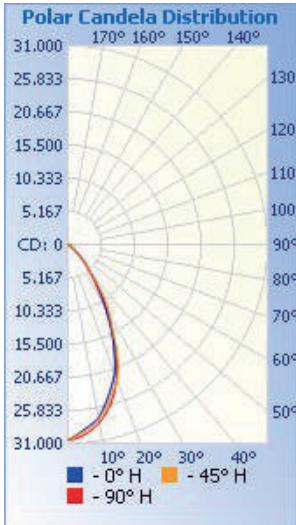
**Finish**  
BK=Black  
WT=White\*

**PHOTOMETRIC SPEC**

## BLUE OCEAN LIGHTING™

### BOL280WI 60°

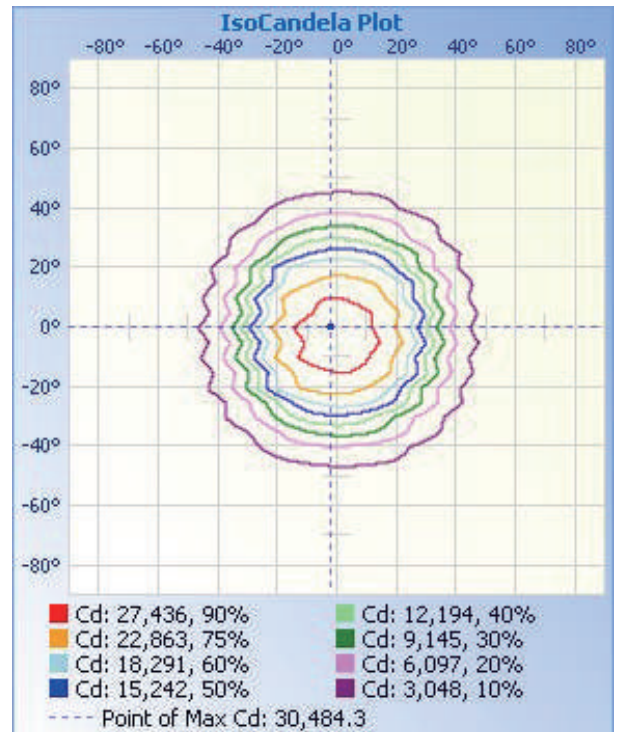
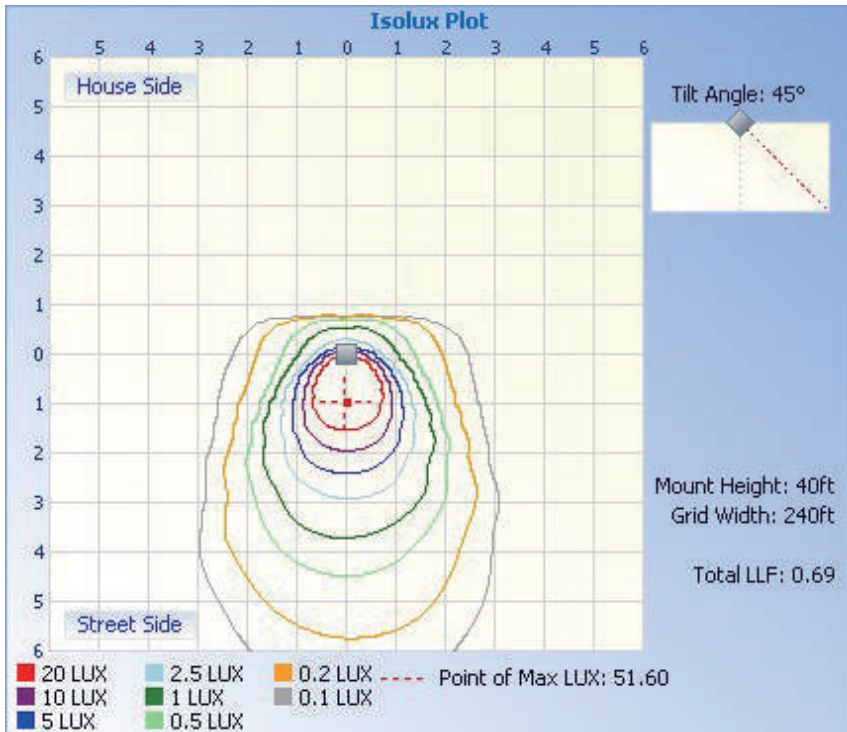
40' Mounting Height



**Illuminance at a Distance**

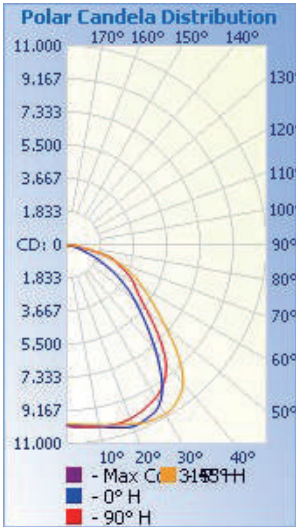
Distance	Center Beam LUX	Beam Width
6.7ft	<b>7,298 LUX</b>	7.1 ft <b>7.2 ft</b>
13.3ft	<b>1,852 LUX</b>	14.1 ft <b>14.3 ft</b>
20.0ft	<b>819 LUX</b>	21.1 ft <b>21.5 ft</b>
26.7ft	<b>460 LUX</b>	28.2 ft <b>28.8 ft</b>
33.3ft	<b>295 LUX</b>	35.2 ft <b>35.9 ft</b>
40.0ft	<b>205 LUX</b>	42.3 ft <b>43.1 ft</b>

■ Vert. Spread: 55.7°  
 ■ Horiz. Spread: 56.6°



**PHOTOMETRIC SPEC**

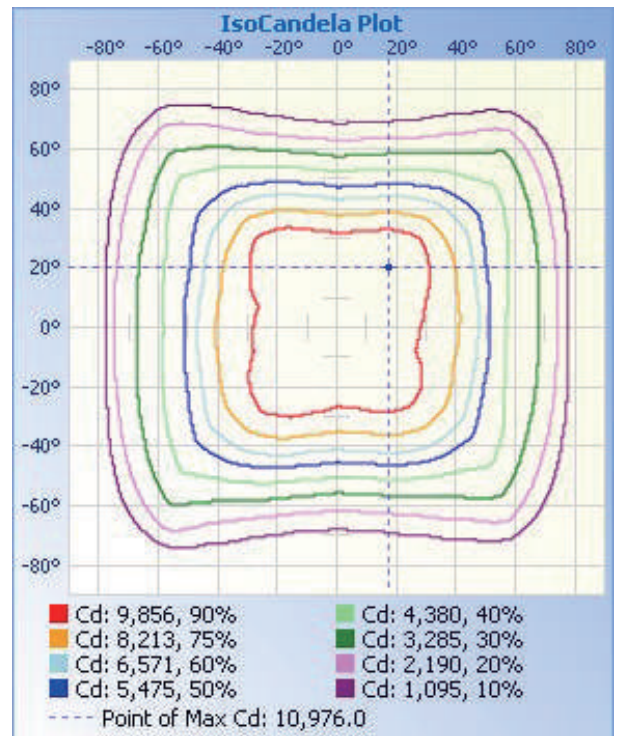
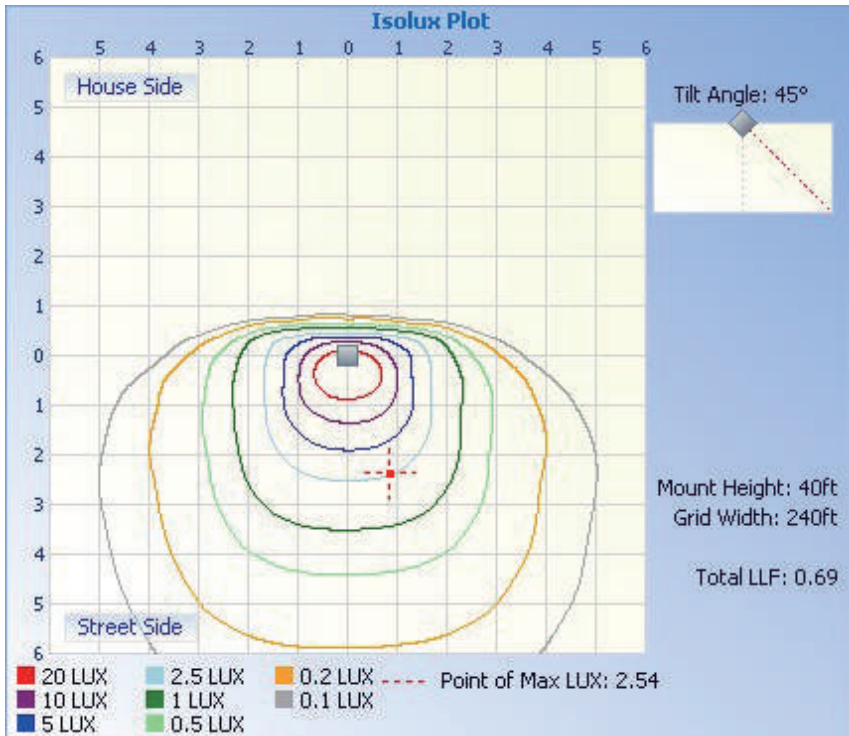
**BLUE OCEAN LIGHTING™**  
**BOL280WI 90°X100°**  
 40' Mounting Height



**Illuminance at a Distance**

Distance	Center Beam LUX	Beam Width
6.7ft	<b>2,391 LUX</b>	14.6 ft 15.9 ft
13.3ft	<b>607 LUX</b>	28.9 ft 31.6 ft
20.0ft	<b>268 LUX</b>	43.5 ft 47.5 ft
26.7ft	<b>151 LUX</b>	58.1 ft 63.4 ft
33.3ft	<b>96.8 LUX</b>	72.4 ft 79.1 ft
40.0ft	<b>67.1 LUX</b>	87.0 ft 95.0 ft

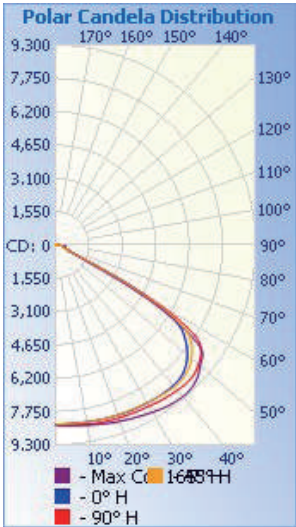
■ Vert. Spread: 94.8°  
 ■ Horiz. Spread: 99.8°





**PHOTOMETRIC SPEC**

**BLUE OCEAN LIGHTING™**  
**BOL280WI 120°**  
 40' Mounting Height



**Illuminance at a Distance**

Distance	Center Beam LUX	Beam Width
6.7ft	2,012 LUX	23.1 ft 15.6 ft
13.3ft	511 LUX	45.9 ft 30.9 ft
20.0ft	226 LUX	69.0 ft 46.5 ft
26.7ft	127 LUX	92.1 ft 62.1 ft
33.3ft	81.4 LUX	114.9 ft 77.4 ft
40.0ft	56.4 LUX	138.0 ft 93.0 ft

Vert. Spread: 119.8°  
 Horiz. Spread: 98.6°

